

B D T

THE CLEAN SOLUTION

Catalog | www.bdt-dental.de

WHEN QUALITY HAS TRADITION AND OUTSTANDING SERVICE IS, WHAT MAKES US SUCCESSFUL

How do you go from a small company in Offenburg to a globally successful manufacturer?

Ditmar Stemmer, Anton Prinzbach und Klaus Bruder founded BDT GmbH on the 1st January 1983, carrying on the dental technology division as a separate business when Bregler KG ended equipment manufacturing in 1982. Ditmar Stemmer continues as a Managing Director to this day following the retirement of the other founders.

The mission was clear: Improve work in dental laboratories by simplifying and optimizing processes and end products. In order to achieve this, we developed our own tool molds and had the necessary components manufactured by renowned, regional companies, which were then assembled in our facilities in Offenburg. This way, we could ensure the highest quality and efficiency for the production of larger quantities in a shorter period of time – in those days as well as today.

The first in-house product developments included the polymerization bath, the plaster separator with the 4-chamber clarification system and the air hose return device. The interest was great and the success confirmed our mission. Our products were in increasing demand, so that from now on we are regularly expanding the range of dental products. We have also been ISO-9001 certified since 2019.

Today, with Jessica Cooper, Ditmar and Daniel Stemmer as managing directors, we are a family business in the second generation, we sell our sophisticated dental products worldwide and are an international, successful manufacturer with the highest quality “Made in Germany”.

As a family business we stand for informative, fast and flexible interaction in all areas. With BDT at your side, you benefit from 40 years of experience and top quality.



Ditmar Stemmer

Ditmar Stemmer
Managing Director

Jessica Cooper

Jessica Cooper
Managing Director

Daniel Stemmer

Daniel Stemmer
Managing Director

WATER TECHNOLOGY

Plaster separator	6
Plaster separator accessories	7
Plaster separator accessories	8
Water exhaust pump	9
DentaFlocTabs	10
DentaFloc	11
Metering device	12
Steam cleaner DR-1	13
Water control system	14
Water control system	15

SUCTION TECHNOLOGY

Extraction cabinet ATEX420	18
Extraction cabinet ASOB / ASMB	19
Extraction cabinet accessories	20
Extraction unit	21
Dust/ Sand pre-separator	22
Cyclone separator	23

LABORATORY TECHNOLOGY

Air hose return device	26
Air hose return device	27
Air blower	28
Holder	29
Spiral hose	30
Air hose	31
Air accessories	32
Return device for handpiece cable / holder	33
Gas fitting	34
Gas hose / accessories	35

LABORATORY REQUIREMENTS

TR-Box	38
TR-Box mini	39
Disinfection bath	40
Breglit stainless steel care products	41

POLYMERIZATION TECHNOLOGY

Polymerization bath IVO – 2	44
Polymerization bath IVO – 4	45
Cooling bath	46
SR-IVOCAP accessories	47
Wall holder	48
Stand holder	49



WATER TECHNOLOGY

Water is one of the most valuable raw materials and is not available to us without restrictions.

In many areas of operations, contamination cannot always be avoided. With the separation systems from BDT, contaminated wastewater can be pretreated and cleaned before it is fed back into the sewer system.

PLASTER SEPARATOR

with sealed 4-chamber clarification system

- ✓ No unpleasant odors
- ✓ No overflowing
- ✓ Quick and easy to clean due to usage of inlay foil
- ✓ Highly effective in separating solid substances
- ✓ Fill-level-control through to transparent container



PRODUCT INFORMATION

Height	320 mm
Diameter	340 mm
Discharge height	245 mm
Discharge connection	Ø 50 mm
Inlet connection	1 ½ inch
Capacity	14 litre

Item no. 10001

PLASTER SEPARATOR ACCESSORIES

Water supply

Item no. 70073

Supply pipe straight, length: 500 mm, 1 1/2 inch



Item no. 70074

Supply pipe, 90° angle, length: 500 mm, 1 1/2 inch



Item no. 70122

90 ° angle for inlet hose



Item no. 70084

Adapter IKEA Siphon LILLVIKEN to 1 1/2 inch



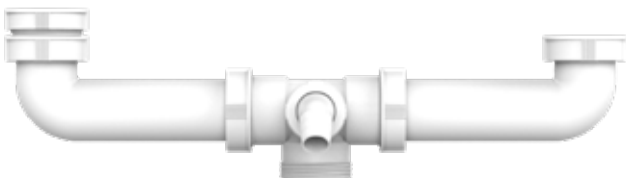
Item no. 90027

T-connector for double water supply



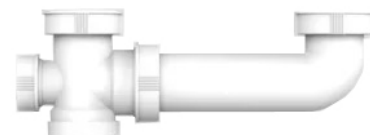
Item no. 20202

Discharge connector for double sink, length: 120 – 600 mm, 1 1/2 inch



Item no. 60086

Discharge connector, length: 80 – 300 mm, 1 1/2 inch



PLASTER SEPARATOR ACCESSORIES

Replacement inlay plastic bags / water drainage

Item no. 20004

Replacement inlay plastic bags, set of 25 pieces



Item no. 60089

Connecting pipe for 2 plaster separator



Item no. 70115

Flexible discharge hose, inlet 50 mm, outlet 40/50 mm, length: 1,000 mm



Item no. 70125

Flexible discharge hose, inlet 50 mm, outlet 40/50 mm, length: 750 mm



Item no. 70124

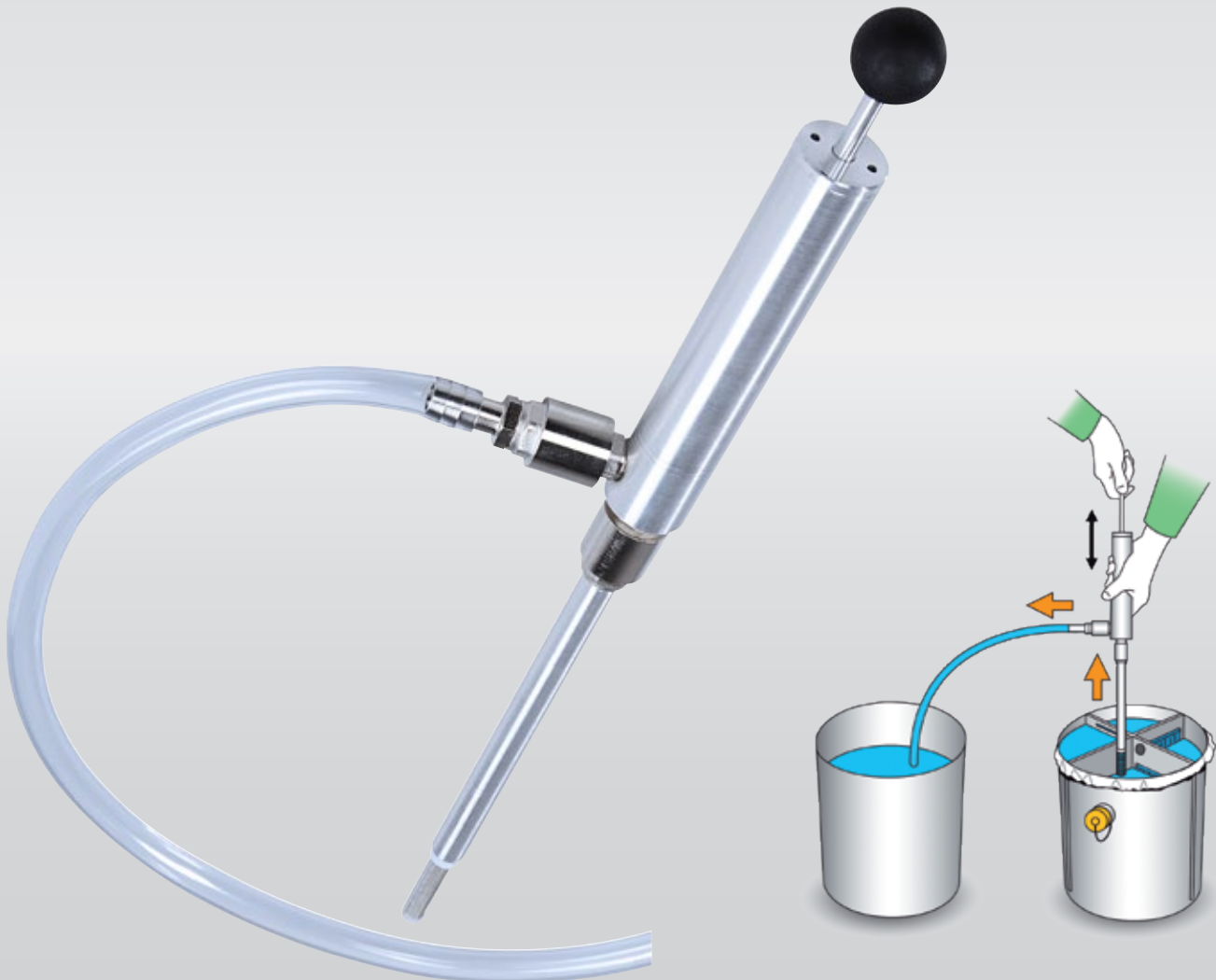
Flexible discharge hose, inlet 50 mm, outlet 40/50 mm, length: 500 mm



WATER EXHAUST PUMP

for plaster separator

- ✓ Practical addition to the plaster separator
- ✓ Simple and quick removal of residual water
- ✓ Effortless and efficient



PRODUCT INFORMATION

Total length	530 mm
Stroke length	135 mm
Promotional volume	100 ml
Hose length	1,000 mm

Item no. 10027

DENTAFLUCTABS

Odor-preventing and clotting

- ✓ DentaFloc eliminates 99 % of all bacterias
- ✓ Due to the effective DentaFloc in the tabs, 93 % of the gypsum and embedding material settles in the plaster separator
- ✓ Includes the hanging basket
- ✓ Unpleasant odors are avoided in the first place



PRODUCT INFORMATION

	10 St.	25 St.
Content	10 St.	25 St.
Height	100 mm	130 mm
Diameter	100 mm	100 mm
Weight	170 g	350 g
Item no.	21002	21003

INSTRUCTIONS FOR USE

Hang the dosing basket with one DentaFlocTab in the highest chamber of the plaster separator.
Put a new DentaFlocTab at least once a week in the basket, so that the prevention of odor and plaster flocculation are always guaranteed.

DENTAFLC

Odor-preventing and clotting

- ✓ 93 % of the gypsum and embedding material settles in the plaster separator
- ✓ Reduces bacterial growth
- ✓ Best used with the dosing device TR or IR



PRODUCT INFORMATION

Content	5 litre	10 litre
Height	260 mm	320 mm
Width	180 mm	220 mm
Depth	160 mm	200 mm
Item no.	20154	20161

INSTRUCTIONS FOR USE

Dosing of DentaFloc with our dosing device TR and IR. If you use it without a dosing device: Add a couple of drops (approximately 5–10 ml) per work piece to be trimmed into the plaster separator. Flocculants are environmentally friendly.

DOSING DEVICE TR/IR

In connection with a plaster trimmer or infrared sensor

Treatment plant for wastewater containing gypsum

Using our dosing devices ensures simple, effective and practice-oriented use of our DentaFloc.

- ✓ Automatic dosing
- ✓ Adjustable optimal dosage



PRODUCT INFORMATION

TR dosing device

Dimensions (l x w x h) 70 x 100 x 120 mm

Electrical values 230 V / 50 Hz

Load Min. 300 W / Max. 3,000 W

Item no. 20151

PRODUCT INFORMATION

IR dosing device

Dimensions (l x w x h) 70 x 100 x 120 mm

Electrical values 230 V / 50 Hz

Sensor area 0 – 600 mm

Item no. 20153

STEAM CLEANER DR-1

For cleaning small parts, dental work and instruments, as well as for selective use on larger objects.

- ✓ Removal of grease, adhesive wax, dirt and adhesions
- ✓ Automatic filling
- ✓ Continuously adjustable amount of steam
- ✓ Operation via a foot switch
- ✓ Environmentally friendly without any chemical additives
- ✓ Boiler pressure indicator



PRODUCT INFORMATION

Dimensions (l x w x h) 500 x 210 x 410 mm

Electrical values 230 V / 50 Hz / 2 KW

Pressure range 0–4,5 bar

Item no. 10013

WATER CONTROL

Contactless Water Control System for hands free tap operation

- ✓ For cold and warm water
- ✓ Reducing the water consumption
- ✓ Installation for existing taps
- ✓ Simplified operation

Item no. 10047

Water control system with limit switch



Item no. 10026

Water control system with foot switch



Item no. 20179

Water control system with sensor



PRODUCT INFORMATION

	Limit switch	Foot switch	Sensor
Solenoid valve connections	ø 10 mm	ø 10 mm	ø 10 mm
Electrical values	230 V / 50 Hz / 20 W	230 V / 50 Hz / 20 W	230 V / 50 Hz / 20 W
Sensor range	–	–	0 – 600 mm
Item no.	10047	10026	20179

WATER CONTROL

Contactless Water Control System for hands free tap operation

- ✓ For cold water
- ✓ Reducing the water consumption
- ✓ Installation for existing taps
- ✓ Simplified operation

Item no. 10048

Water control system with limit switch



Item no. 10028

Water control system with foot switch



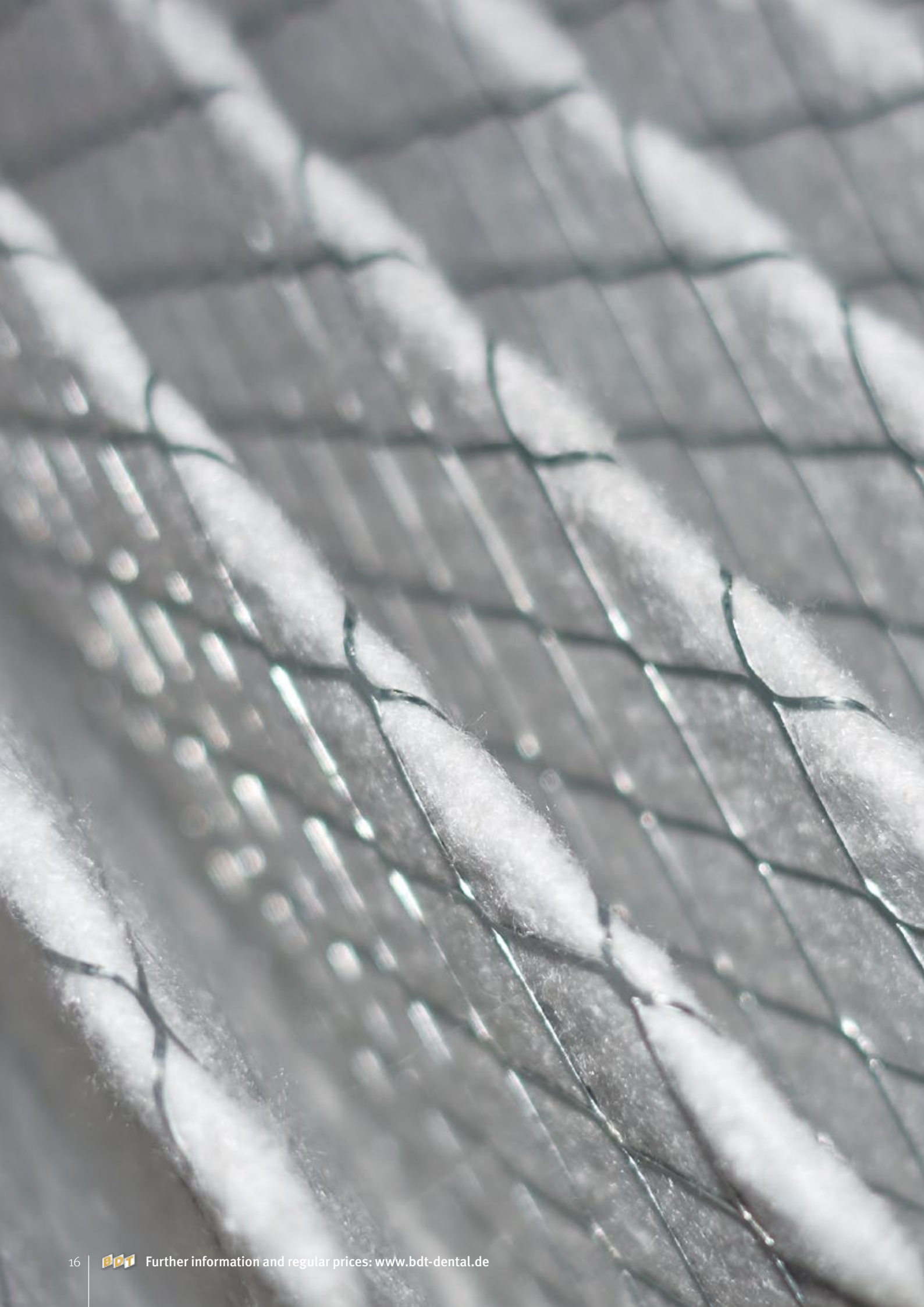
Item no. 20177

Water control system with sensor



PRODUCT INFORMATION

	Limit switch	Foot switch	Sensor
Solenoid valve connections	ø 10 mm	ø 10 mm	ø 10 mm
Electrical values	230 V / 50 Hz / 10 W	230 V / 50 Hz / 10 W	230 V / 50 Hz / 10 W
Sensor range	–	–	0 – 600 mm
Item no.	10048	10028	20177



SUCTION TECHNOLOGY

We breathe in and out every hour, every minute. Our body needs the oxygen in the air we breathe in order to produce energy.

If there are fine dust and fumes in it, our lungs can be damaged in the long term. Our suction systems are specially designed to reduce this risk to a minimum.

EXTRACTION CABINET ASEX420

for extraction of isopropanol fumes to ATEX and IECEx standards

- ✓ Specially developed to avoid contact with dangerous, explosive substances
- ✓ Housing made of acid-resistant PVC
- ✓ With explosion protection, approved according to ATEX 2014/ 34/ EU Zone 2
- ✓ With suction openings on the rear wall and also on the bottom



PRODUCT INFORMATION

Dimensions (l x w x h) 1,000 x 500 x 1,290 mm

Inner dimensions 990 x 420 x 800 mm

Electrical values 230 V / 50 Hz / 180 W

Promotional volume 420 m³/h

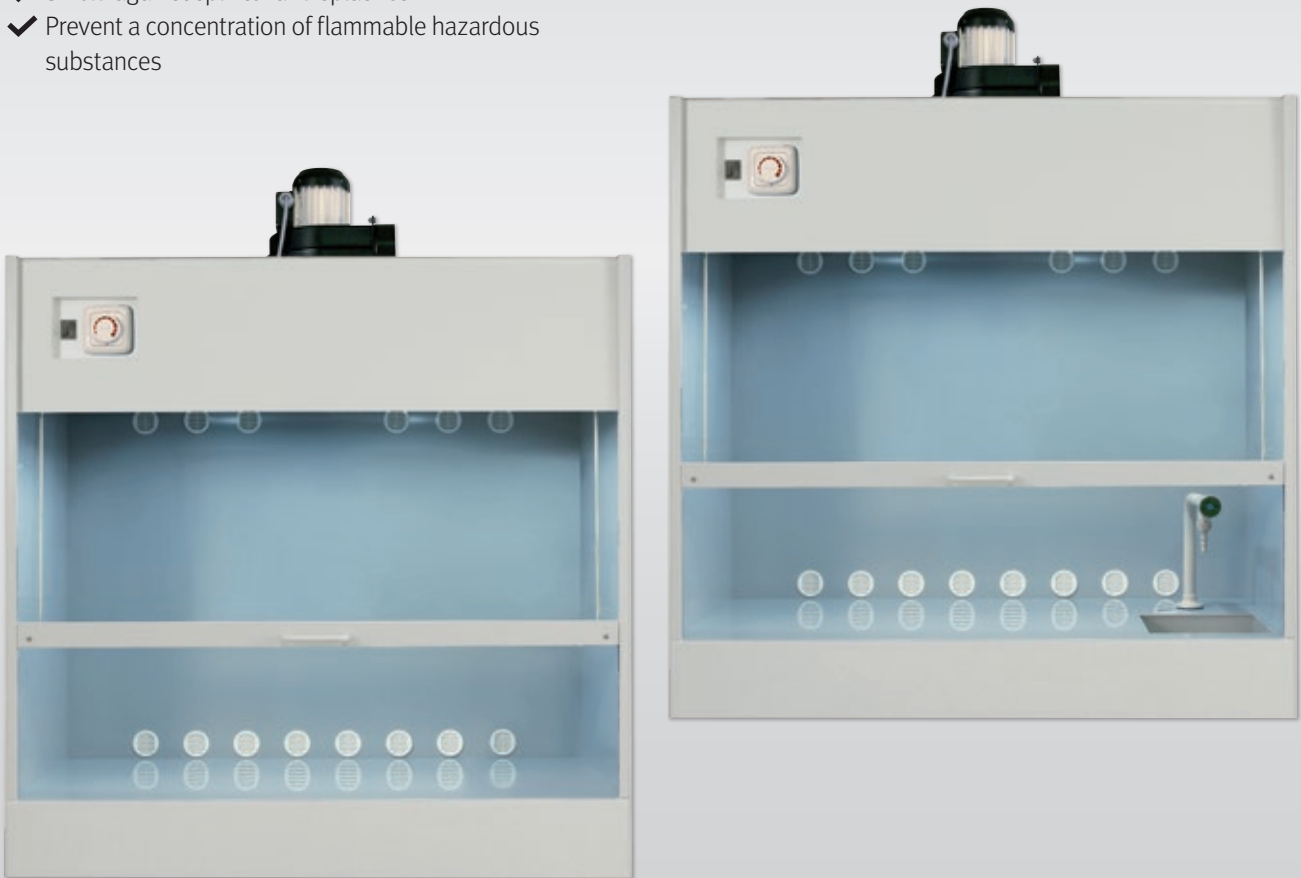
Static pressure (max.) 330 Pa

Item no. 10046

EXTRACTION CABINET ASOB / ASMB

A extraction cabinet protects you and your employees in the laboratory from exposure to hazardous substances by:

- ✓ Effective withhold of fumes, aerosols and dust
- ✓ Shield against splinter and splashes
- ✓ Prevent a concentration of flammable hazardous substances



PRODUCT INFORMATION

Typ	ASOM430	ASMB430
Dimensions (l x w x h)	1,000 x 500 x 1,250 mm	1,000 x 500 x 1,250 mm
Inner dimensions	990 x 420 x 800 mm	990 x 420 x 800 mm
Electrical values	230 V / 50 Hz / 180 W	230 V / 50 Hz / 180 W
Promotional volume	430 m ³ /h	430 m ³ /h
Static pressure (max.)	340 Pa	340 Pa
Washbasin	–	X
Item no.	10032	10022

EXTRACTION CABINETS ACCESSORIES

Item no. 20098

Sub-frame

- ✓ Optimum working height
- ✓ Rust-protected



Item no. 50135

Hose connector

- ✓ Lengthen, connect and joining of hoses
- ✓ Installation-friendly
- ✓ Rust-protected
- ✓ Lightweight



Item no. 50134

Exhaust hose

- ✓ Hazardous areas in which electrically conductive hoses are required
- ✓ Approved according to TRGS 727 and ATEX 2014/34 EU
- ✓ Good flexibility
- ✓ Minimal bending radii
- ✓ Optimum aerodynamics



Item no. 50136

Hose clamps (Set of 4)

- ✓ Special clamp for attaching the exhaust hose
- ✓ Installation-friendly
- ✓ Robust
- ✓ Rust-protected
- ✓ Almost fully leak proof and tensile strength connection due to bridge profiles



PRODUCT INFORMATION

	Sub-frame	Exhaust hose	Hose connector	Hose clamps
Dimensions (l x w x h)	1,000 x 500 x 750 mm	–	–	–
Licensing	–	ATEX	–	–
Diameter	–	DN 100	DN 100	DN 100
Material	Aluminium	PUR L-EL	Galvanized sheet steel	Galvanized sheet steel
Item no.	20098	50134	50135	50136

EXTRACTION UNIT

with activated carbon filter

Item no. 20192

Extraction unit

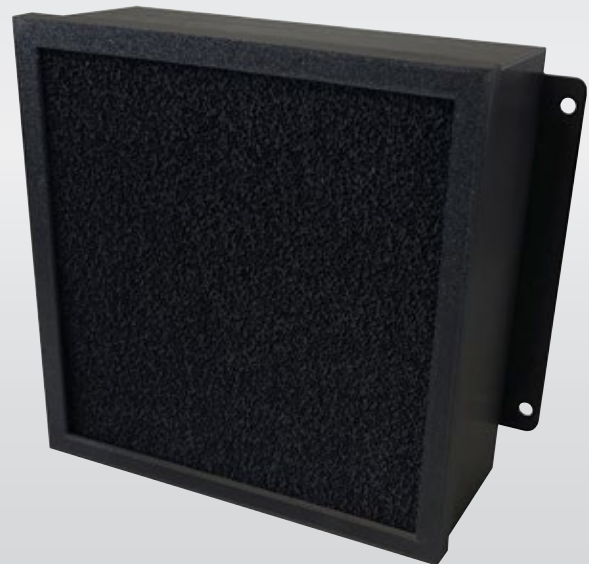
- ✓ Protects against harmful vapors
- ✓ Tabletop unit
- ✓ Automatic power-on through a light barrier
- ✓ 89 % of separation efficiency when used with monomer
- ✓ 84 % of separation efficiency when used with insulating liquid



Item no. 20206

Filter cartridge

- ✓ Filter change once a year
- ✓ Filter change after 50 hours of operation



PRODUCT INFORMATION

Extraction unit

Dimensions (l x w x h) 260 x 220 x 260 mm

Electrical values 230 V / 50 Hz / 100 W

Item no. 20192

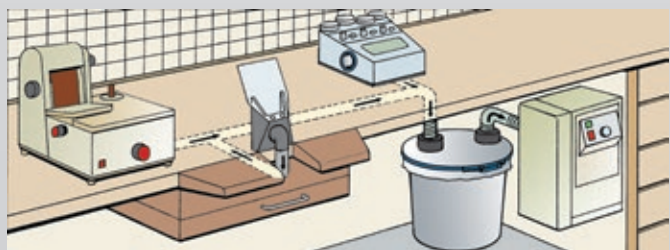
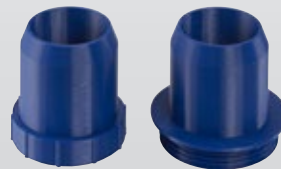
PRODUCT INFORMATION

Filter cartridge

Item no. 20206

DUST / SAND PRE-SEPARATOR

- ✓ Perfect for separating blasting sand
- ✓ Easy integration into an existing system
- ✓ Increasing the filter lifespan
- ✓ Prevention of the destruction or deterioration of the piping system
- ✓ Easy disposal of the separated waste



PRODUCT INFORMATION

	Dust / sand pre-separator	Replacement inlay plastic bags (without illustration)
Height	350 mm	-
Diameter	340 mm	-
Connection	Ø 40 or 50 mm	-
Item no.	20204	20004

CYCLONE SEPARATOR

- ✓ Perfect for separating milling dust
- ✓ Easy integration into an existing system
- ✓ Increasing the filter lifespan
- ✓ 99 % degree of separation
- ✓ Easy disposal of the separated waste



PRODUCT INFORMATION

	Cyclone separator	Replacement inlay plastic bags (without illustration)
Height	550 mm	–
Diameter	340 mm	–
Connection	Ø 40 or 50 mm	–
Item no.	74001	20004

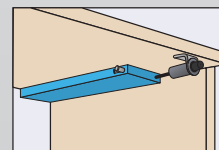
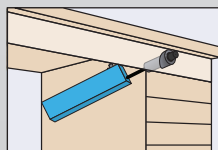
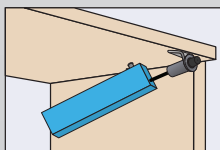
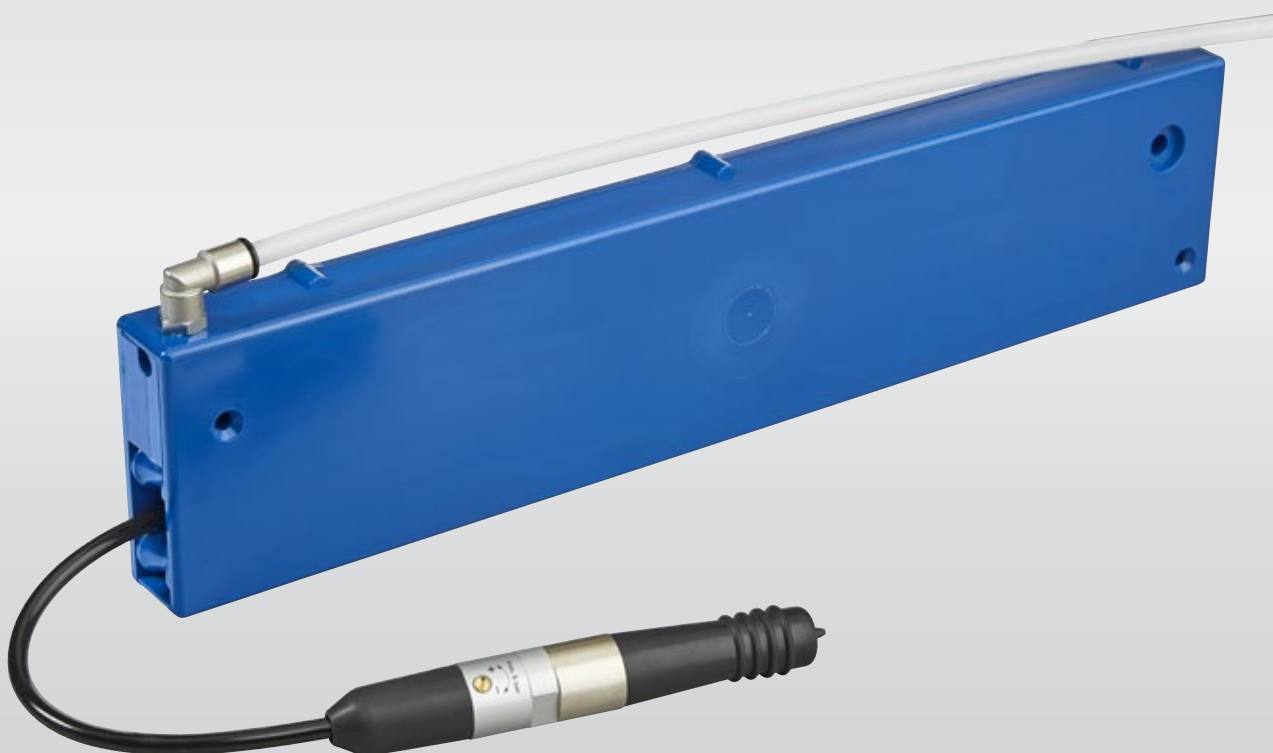


LABORATORY TECHNOLOGY

Particular attention is paid to a clean environment in the laboratory. With our laboratory technology, we support you in keeping your work environment clean. From air blowers to compressed air accessories, from return devices to gas fittings. In our product range you will find the suitable part for your laboratory facilities.

AIR HOSE RETURN DEVICE

- ✓ Including the air blower silent, 1 m connector hose & plug-in nipple
- ✓ Space-saving, gentle hose guiding
- ✓ Blowing without traction
- ✓ Compact unit
- ✓ Can be integrated into laboratory furniture

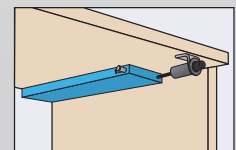
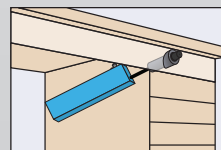
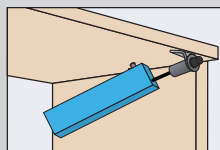
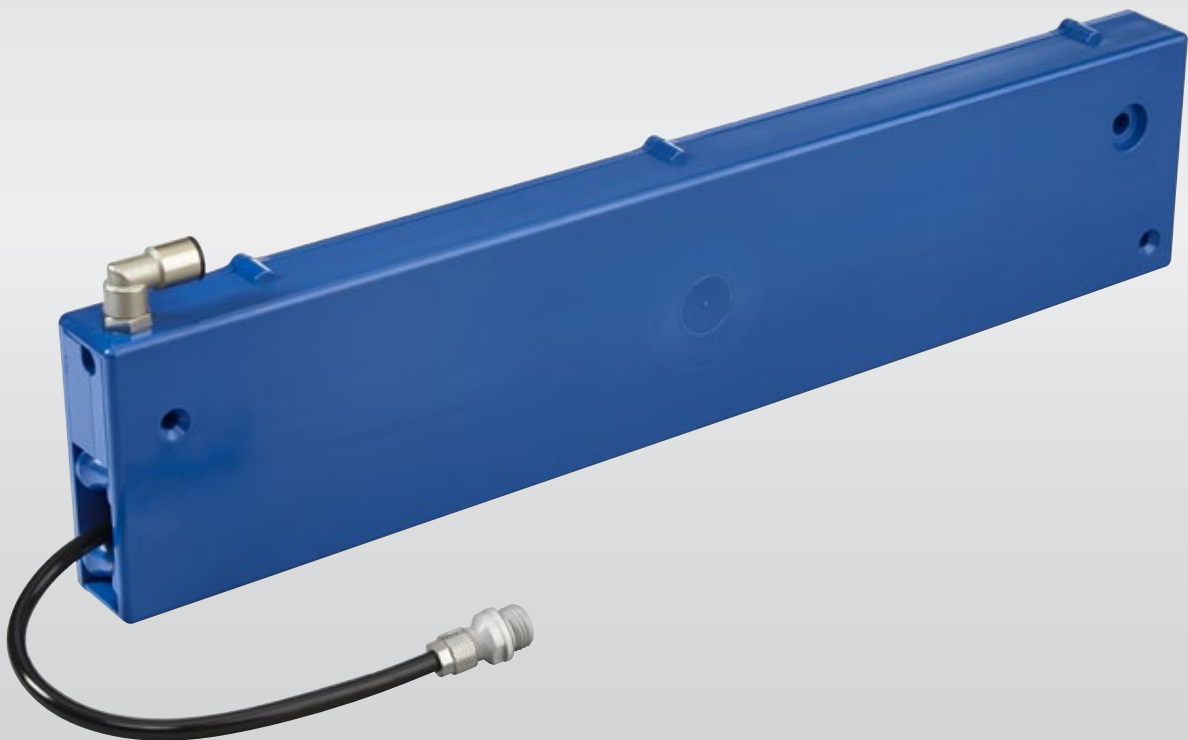


PRODUCT INFORMATION

Dimensions (l x w x h)	420 x 30 x 90 mm	470 x 30 x 90 mm
Hose length	550 mm	690 mm
Connection inlet	8/6 mm	8/6 mm
Connection outlet	6/3 mm	6/3 mm
Item no.	20148	20238

AIR HOSE RETURN DEVICE

- ✓ Space-saving, gentle hose guiding
- ✓ Blowing without traction
- ✓ Compact unit
- ✓ Integrable in laboratory furniture



PRODUCT INFORMATION

Dimensions (l x w x h)	420 x 30 x 90 mm	470 x 30 x 90 mm
Hose length	550 mm	690 mm
Connection inlet	8/6 mm	8/6 mm
Connection outlet	6/3 mm	6/3 mm
Item no.	20144	20237

AIR BLOWER

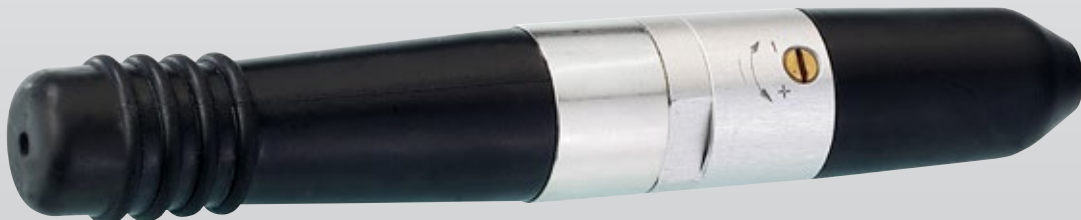
- ✓ Easy air volume control
- ✓ Rubber grommet to protect the tables
- ✓ 2 versions available
- ✓ Version silent 23 db quieter
- ✓ Up to 6 bar operating pressure

Item no. 50059 / 50075 / 50045

Version Silent



Item no. 50063 / 50132



PRODUCT INFORMATION

Version Silent	x	x	x	-	-
Hose connector	8/6 mm	6/4 & 6/3 mm	4/3 mm	8/6 mm	6/4 & 6/3 mm
Operating pressure	max. 6 bar	max. 6 bar	max. 6 bar	max. 6 bar	max. 6 bar
Item no.	50059	50075	50045	50063	50132

HOLDER

Suitable for air blower

Item no. 70034

Holder slanted flush mounted



Item no. 70102

Holder straight flush mounted



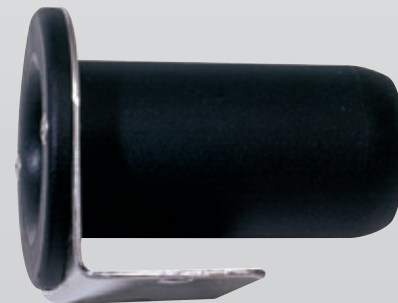
Item no. 70111

Holder slanted surface mounted



Item no. 70110

Holder straight surface mounted



SPIRAL HOSE

including air blower silent and plug-in nipple

- ✓ 2.5 m hose length
- ✓ Easy air volume regulation
- ✓ Air blower silent
- ✓ Up to 6 bar operating pressure



PRODUCT INFORMATION

Length	2,5 m
Operating pressure	Max. 6 bar
Hose diameter	6/4 mm
Plug-in nipple	NW 7.2

Item no. 20089

COMPRESSED-AIR HOSE

Item no. 50079 / 50073

Compressed-air hose PVC fibre-reinforced



Item no. 50101 / 50004 / 50033

Compressed-air hose PU



Item no. 50110

Compressed-air hose PUR



PRODUCT INFORMATION

Material	pvc fibre-reinforced	pvc fibre-reinforced	PU	PU	PU	PUR
Diameter	8/6 mm	6/4 mm	8/6 mm	6/4 mm	4,3/3 mm	6/3 mm
Item no.	50079	50073	50101	50004	50033	50110

COMPRESSED-AIR ACCESSORIES

for hoses

Item no. 50080 / 50009

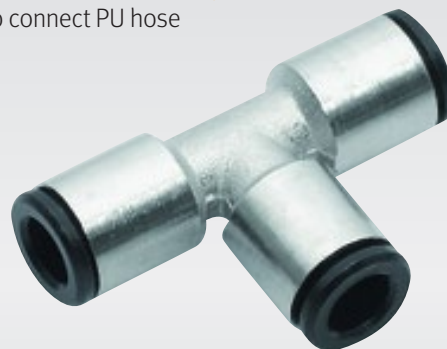
Plug in nipple DN 7.2



Item no. 70069 / 50002

T-hose connector push-in

✓ To connect PU hose



Item no. 70070 / 70071

T-hose connector

✓ To connect PVC hose fiber-reinforced and PU hose



Item no. 50138 / 50102

Pressure regulator



PRODUCT INFORMATION

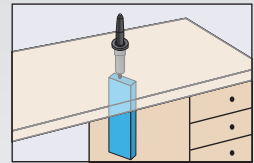
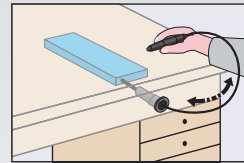
	Plug-in nipple DN 7.2		T-hose connector push-in		T-hose connector		Pressure regulator	
Suitable for hose diameter	8/6 mm	6/4 mm	8/6 mm	6/4 mm	8/6 mm	6/4 mm	8/6 mm	6/4 mm
Item no.	50080	50009	70069	50002	70070	70071	50138	50102

RETURN DEVICE FOR HAND-PIECE CABLE / HOLDER

Item no. 20178 / 20239

Return device for handpiece cable

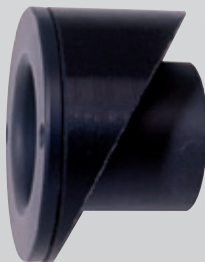
- ✓ Existing handpiece can be integrated
- ✓ Space-saving, gentle hose guiding
- ✓ Work without traction
- ✓ Compact unit
- ✓ Integrable in laboratory furniture



Item no. 70113 / 70116 / 70112

Holder for hand piece

- ✓ Installation straight or slanted



PRODUCT INFORMATION

Return device for handpiece cable

Dimensions (l x w x h)	420 x 30 x 90 mm	470 x 30 x 90 mm
------------------------	------------------	------------------

Extension length	550 mm	690 mm
------------------	--------	--------

Item no.	20178	20239
----------	-------	-------

PRODUCT INFORMATION

Holder

Inner diameter	28 mm	30 mm	32 mm
----------------	-------	-------	-------

Item no.	70113	70116	70112
----------	-------	-------	-------

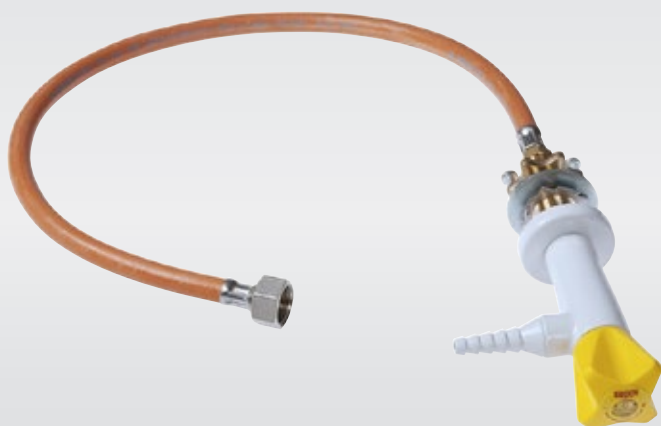
GAS FITTINGS

for laboratory benches

- ✓ For combustible gas
- ✓ Up to 7 bar operating pressure
- ✓ Approved acc. to EN 13792

Item no. 30172

Gas angle tap with 1 gas hose



Item no. 30170

Gas fitting with 1 gas hose and 1 hose nipple



Item no. 30169

Gas fitting with 2 gas hoses



Item no. 30161

Gas angle tap with 1 hose nipple



Item no. 30171

Gas fitting with 2 hose nipples



PRODUCT INFORMATION

Gas fitting

Connection inlet	hose nipple	gas hose ½ inch	gas hose ½ inch
Connection outlet	hose nipple	hose nipple	gas hose ½ inch
Installation dimension	Ø 40 mm	Ø 40 mm	Ø 40 mm
Item no.	30171	30170	30169

PRODUCT INFORMATION

Gas angle tap

Connection inlet	hose nipple	gas hose ½ inch
Installation dimension	Ø 21 mm	Ø 21 mm
Item no.	30161	30172

GAS HOSE / ACCESSORIES

Item no. 30162 / 30060 / 30163

Safety gas hose



Item no. 30160

Gas hose



Item no. 30194

Hose connector cross



Item no. 30193

Hose connector T-piece



Item no. 30195

Hose connector straight



Item no. 30196

Hose clamps



Item no. 30188 / 30187 / 30186

Clamp ring connector

✓ For permanent connection of CU pipes and PE-X pipes



PRODUCT INFORMATION				
	Safety gas hose			Gas hose
Length	500 mm	1,000 mm	1,500 mm	yard goods
Diameter	18/10 mm	18/10 mm	18/10 mm	14/10 mm
Operating pressure	100 mbar	100 mbar	100 mbar	100 mbar
Item no.	30162	30060	30163	30160

PRODUCT INFORMATION				
Hose connector				
Type	cross	T-piece	straight	clamps
Diameter	10 mm	10 mm	10 mm	8–12 mm
Item no.	30194	30193	30195	30196
Clamp ring connector				
Diameter	10 mm	12 mm	15 mm	
Item no.	30188	30187	30186	



LABORATORY REQUIREMENTS

The laboratory is an important component of dental technology. This is where models are created, dentures are made or impression materials are mixed. We have the right products from boxes for models, disinfection tubs to professional stainless steel care.

TR-BOX

for articulator

- ✓ Transport and storage
- ✓ Aluminum design
- ✓ Lockable
- ✓ Shock-resistant
- ✓ Lightweight



PRODUCT INFORMATION

Dimensions (l x w x h) 270 x 230 x 210 mm

Inner dimensions 230 x 190 x 160 mm

Item no. 20235

TR-BOX MINI

for models with or without base

- ✓ Transport and storage
- ✓ Shock-resistant
- ✓ Stackable
- ✓ Lightweight
- ✓ Space for 6 models
- ✓ Interchangeable foam



PRODUCT INFORMATION

Colour	Light grey RAL 7035	Anthracite RAL 7016
Dimensions (l x w x h)	265 x 171 x 71 mm	265 x 171 x 71 mm
Weight	400 g	400 g
Item no.	20218/7035	20218/7016

DISINFECTION BATH

- ✓ Including sieve insert, draining equipment and lid
- ✓ Bath made from PP
- ✓ For cleaning instruments and impressions



PRODUCT INFORMATION

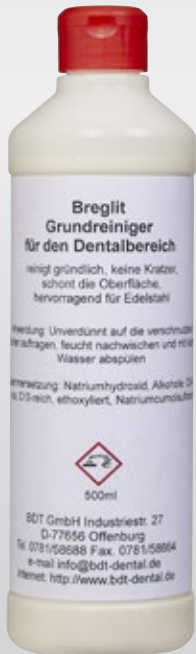
Colour of the lid	Transparent	White
Dimensions (l x w x h)	340 x 210 x 120 mm	340 x 210 x 120 mm
Filling volume	4 litre	4 litre
Item no.	10039	10040

BREGLIT CLEANING AGENT

Item no. 20013

Breglit stainless steel basic cleaner 500 ml

- ✓ Removes persistent dirt and stains
- ✓ Gentle cleaning
- ✓ Suitable for all stainless steel surfaces



Item no. 20076

Breglit limescale remover 500 ml

- ✓ Antibacterial
- ✓ Biodegradable



Item no. 20008

Breglit stainless steel care 1,000 ml in a spray bottle

Stainless steel care

- ✓ Fingerprints, marks, stains and tarnishes disappear
- ✓ Prevents rapid setting of plater and limescale
- ✓ Suitable for all stainless-steel surfaces



Item no. 20001

Breglit stainless steel care 400 ml in a can





POLYMER- IZATION TECHNOLOGY

Good teeth and strong denture are closely related to one's own quality of life. That is why we ensure precise and high-quality prostheses with our polymerisation technology. The focus is always on high wearing comfort and an accurate fit. In our range you will find everything you need to put a radiant smile on your patients – comfortable and radiant.

POLYMERIZATION BATH

for 2 cuvettes

- ✓ Stainless steel bath
- ✓ Stepless continuous temperature regulation
- ✓ Indirect heating

Item no. 10002

IVO-2



Item no. 10004

IVO-2 special



Item no. 10005

IVO-2 manual



PRODUCT INFORMATION

	IVO-2	IVO-2 special	IVO-2 manual
Dimensions (l x w x h)	350 x 470 x 300 mm	350 x 360 x 260 mm	350 x 360 x 260 mm
Electrical values	230 V / 50 Hz / 1,500 W	230 V / 50 Hz / 1,500 W	230 V / 50 Hz / 1,500 W
Compressed air	X	-	-
Timer	X	-	-
Water level control	X	X	-
Item no.	10002	10004	10005

POLYMERIZATION BATH

for 4 cuvettes

- ✓ Stainless steel bath
- ✓ Stepless continuous temperature regulation
- ✓ Indirect heating

Item no. 10003

IVO-4



Item no. 10033

IVO-4 special



Item no. 10006

IVO-4 manual



PRODUCT INFORMATION

	IVO-4	IVO-4 special	IVO-4 manual
Dimensions (l x w x h)	530 x 470 x 300 mm	530 x 360 x 260 mm	530 x 360 x 260 mm
Electrical values	230 V / 50 Hz / 2,500 W	230 V / 50 Hz / 2,500 W	230 V / 50 Hz / 2,500 W
Compressed air	X	-	-
Timer	X	-	-
Water level control	X	X	-
Item no.	10003	10033	10006

COOLING BATHS

- ✓ Stainless steel bath
- ✓ For 2 or 4 cuvettes
- ✓ Perfect for cooling down the cuvettes



PRODUCT INFORMATION

	KW 2	KW 4
Dimensions (l x w x h)	350 x 360 x 260 mm	530 x 360 x 260 mm
Water connection	X	X
Item no.	10017	10016

SR IVOCAP ACCESSORIES

Item no. 20006

Spring washers for SR Ivocap clamping frame

Regular checking and replacement of the disc springs (approx. every 6 months) guarantees a consistently good work result



Item no. 20075

Rubber gloves, heat resistant



Item no. 20005

Floating balls, Ø 20 mm, 1,000 pieces



Item no. 20003

Dur-Fix-Hardener



Item no. 20146

Stainless steel lid for IVO-2, IVO-2 special, IVO-2 manual



Item no. 20116

Stainless steel lid for IVO-4, IVO-4 special, IVO-4 manual



Item no. 20086

Spiral hose with connector for SR Ivocap-cylinder



WALL HOLDER

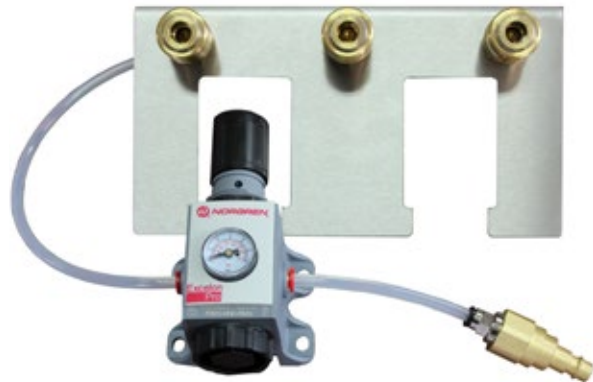
Item no. 20037

Wall holder for 2 SR-Ivocap-cylinder



Item no. 20106

Wall holder for 2 SR-Ivocap-cylinder with 3 air sockets



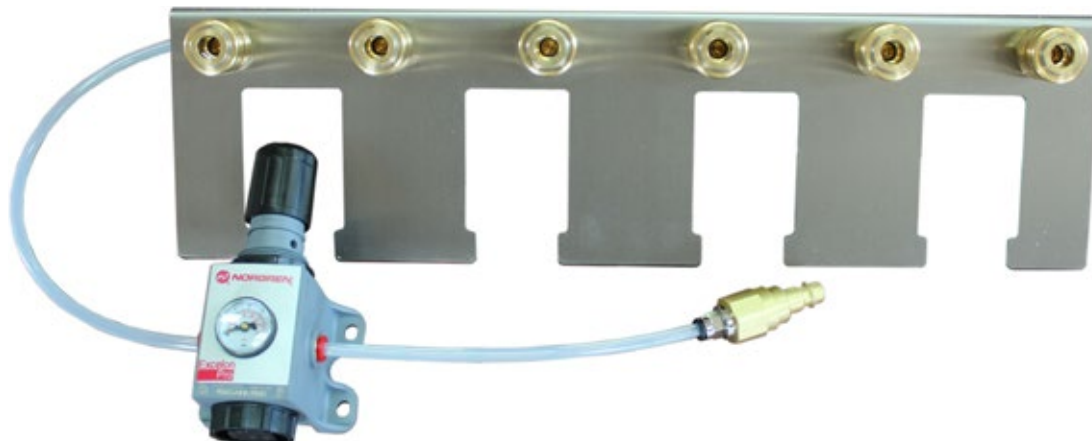
Item no. 20038

Wall holder for 4 SR-Ivocap-cylinder



Item no. 20107

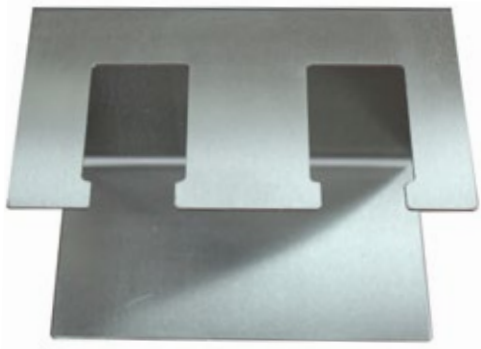
Wall holder for 4 SR-Ivocap-cylinder with 6 air sockets



STAND HOLDER

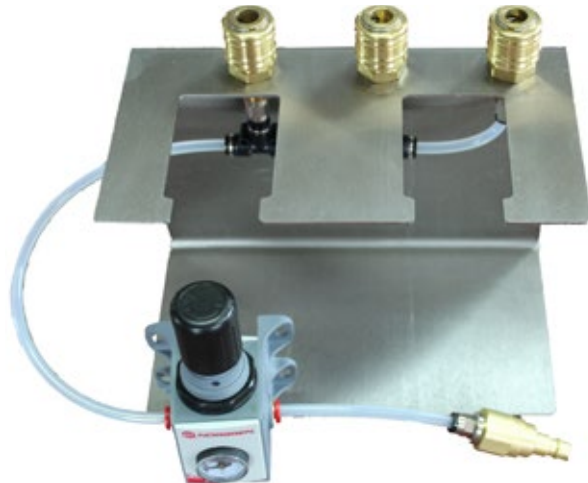
Item no. 20073

Stand holder for 2 SR-Ivocap-cylinder



Item no. 20197

Stand holder for 2 SR-Ivocap-cylinder with 3 air sockets



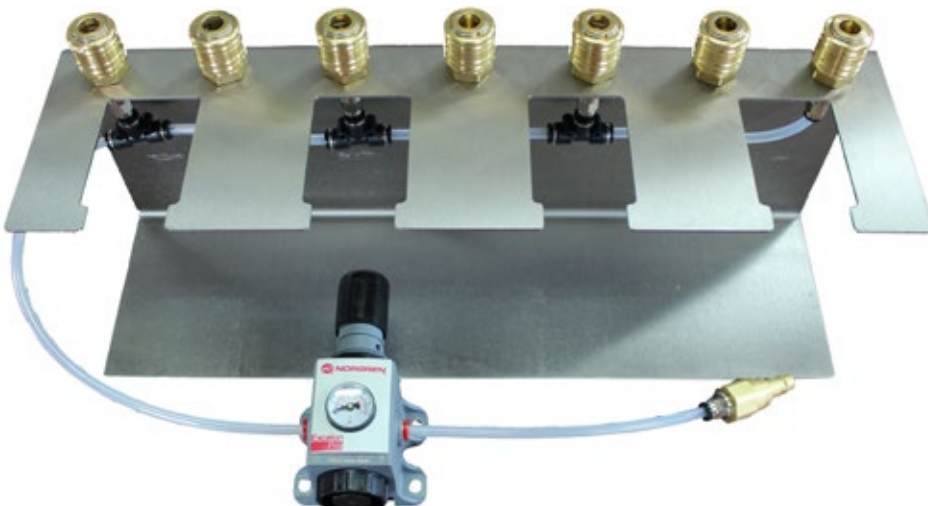
Item no. 20039

Stand holder for 4 SR-Ivocap-cylinder



Item no. 20074

Stand holder for 4 SR-Ivocap-cylinder with 6 air sockets





BDT GmbH Gesellschaft für Gerätetechnik
Industriestraße 27 · D-77656 Offenburg · +49 (0)781 5 86 88 · info@bdt-dental.de
www.bdt-dental.de



PRICE LIST BDT GmbH

WATER TECHNOLOGY

01/2025

Item no.	Product	Price / €
Plaster separator and accessories		
10001	Plaster separator with sealed, 4-chamber clarification system	315,00
70073	Plaster separator supply pipe, straight , length: 500 mm, 1 ½ inch	25,50
70074	Plaster separator supply pipe, 90° angle , length: 500 mm, 1 ½ inch	27,80
70122	90 ° angle for inlet hose	29,10
70084	Adapter IKEA Siphon LILLVIKEN to 1 ½ inch	28,70
90027	T-connector for double water supply	25,50
20202	Discharge connector for double sink, length: 120 mm - 600 mm, 1 ½ inch	34,40
60086	Discharge connector, length: 80 mm - 300 mm, 1 ½ inch	18,20
20004	Replacement inlay plastic bags for plaster separator, set of 25 pieces	25,20
60089	Connecting pipe for 2 plaster traps	24,00
70115	Flexible discharge hose, inlet 50 mm, outlet 40/50 mm, length: 1000 mm	68,00
70125	Flexible discharge hose, inlet 50 mm, outlet 40/50 mm, length: 750 mm	59,00
70124	Flexible discharge hose, inlet 50 mm, outlet 40/50 mm, length: 500 mm	50,00
Water exhaust pump		
10027	Water exhaust pump for plaster separator	116,00
DentaFlocTabs		
21002	DentaFlocTabs, packing unit of 10 pcs.	33,00
21003	DentaFlocTabs, packing unit of 25 pcs.	77,50
21004	Replacement basket for DentaFlocTabs	4,20
DentaFloc		
20154	DentaFloc liquid, 5 liters	60,00
20161	DentaFloc liquid, 10 liters	110,00
Metering Device for waste water containing gypsum plaster		
20153	IR-Metering Device with infrared sensor for sink basins	623,00
20151	TR-Metering Device for metering with joint gypsum trimmer	480,00
Steam cleaner		
10013	Steam cleaner DR-1	not available
Contactless Water Control System		
Cold and warm water		
10047	Limit switch water control system for cold and warm water	445,00
10026	Foot-operated water control system for cold and warm water	455,00
20179	Sensor water control system for cold and warm water	620,00
Cold water		
10048	Limit switch water control system for cold water	332,00
10028	Foot-operated water control system for cold water	342,00
20177	Sensor water control system for cold water	507,00

THE ABOVE PRICES DO NOT INCLUDE. VAT AND DELIVERY OF EACH APPLICABLE FACTORY OFFEBURG

SUCTION TECHNOLOGY

01/2025

Item no.	Product	Price / €
Extraction cabinets		
10046	Extraction cabinet ASEX420 for extraction of isopropanol with ATEX and IECEx approval	6050,00
10032	Extraction cabinet ASOB430 without rinsing basin, with lighting, ventilator and sockets	3980,00
10022	Extraction cabinet ASMB430 with rinsing basin, lighting, ventilator and sockets	4550,00
10050	Extraction cabinet AS3D430 for 3D printer with lighting, ventilator and sockets	4400,00
Extraction cabinets accessories		
20098	Sub-frame for extraction cabinet made of anodized aluminium profile	640,00
50134	Exhaust hose DN 100 for extraction cabinet with ATEX approval per meter	134,50
50135	Hose connector DN 100 for exhaust hose	31,00
50136	Hose clamps DN 100 especially for exhaust hose; Set of 4 clamps	86,00
Extraction Unit		
20192	Extraction unit with activated carbon filter	1240,00
20206	Filter cartridge with activated carbon filter	56,00
Dust- / Sand pre-separator		
20204	Dust- / Sand pre-separator	269,00
20004	Replacement inlay, plastic bags, set of 25 for Dust-/sand pre-separator	25,20
Cyclone separator		
74001	Cyclone separator	280,00
20004	Replacement inlay, plastic bags, set of 25 for Dust-/sand pre-separator	25,20

LABORATORY TECHNOLOGY

Air hose return device		
20148	Air hose return device with 6/3 mm hose, length: 420 mm air blower silent with air adjustment valve, connector hose and plug-in nipple NW 7.2	184,00
20238	Air hose return device long version with 6/3 mm hose, length: 490 mm air blower silent with air adjustment valve, connector hose and plug-in nipple NW 7.2	208,00
20144	Air hose return device with 6/3 mm hose, length: 420 mm	125,00
20237	Air hose return device long version with 6/3 mm hose, length: 490 mm	149,00
Air blower		
50059	Air blower silent with regulation for hose 8/6 mm	58,50
50075	Air blower silent with regulation for hose 6/3-4 mm	58,50
50045	Air blower silent with regulation for hose 4/3 mm	58,50
50063	Air blower with regulation for hose 6/3-4 mm	56,50
50132	Air blower with regulation for hose 8/6 mm	56,50
Holder		
70034	Holder slanted 30 ° for fitted air blower (drill hole Ø 33 mm)	13,00
70102	Holder straight for fitted air blower (drill hole Ø 33 mm)	11,00
70111	Holder slanted 30 ° for air blower for substructure assembly	14,00
70110	Holder straight for air blower for substructure assembly	14,00
70104 / 70119	Holder Ergo for air blower for fitted / substructure	29,00 / 32,00
	Holder straight / slanted 30 ° colored customer request	29,00 / 42,00
Spiral hose		
20089	Spiral hose 6/4 mm including air blower silent and plug-in nipple NW 7.2 Length: 2.5 m	108,00
Compressed-air hose		
50079	Compressed-air hose fiber-reinforced PVC 8/6 mm	7,00
50073	Compressed-air hose fiber-reinforced PVC 6/4 mm	6,50
50101	Compressed-air hose PU 8/6 mm	6,00

THE ABOVE PRICES DO NOT INCLUDE. VAT AND DELIVERY OF EACH APPLICABLE FACTORY OFFEBURG

LABORATORY TECHNOLOGY

01/2025

Item no.	Product	Price / €
Compressed-air hose		
50004	Compressed-air hose PU 6/4 mm	5,50
50033	Compressed-air hose PU 4,3/3 mm	5,00
50110	Compressed-air hose PUR 6/3 mm	6,50
Compressed-air accessories		
50080	Plug-in nipple NW 7,2 for hose 8/6 mm	9,00
50009	Plug-in nipple NW 7,2 for hose 6/4 mm	9,00
70069	T-hose connector push-in 8/6 mm	7,40
50002	T-hose connector push-in 6/4 mm	6,30
70070	T-hose connector 8/6 mm	8,70
70071	T-hose connector 6/4 mm	7,60
50138	Pressure regulator 8/6 mm	76,50
50102	Pressure regulator 6/4 mm	76,50
Return device for handpiece cable / holder		
20178	Return device for handpiece cable, length: 420 mm	107,50
20239	Return device for handpiece cable long version , length: 490 mm	125,00
70113	Holder for hand piece Ø 28 mm (drill hole Ø 37 mm)	23,00
70116	Holder for hand piece Ø 30 mm (drill hole Ø 37 mm)	23,00
70112	Holder for hand piece Ø 32 mm (drill hole Ø 37 mm)	23,00
Gas fitting		
30171	Gas fitting with 2 hose nipple Ø 10 mm	285,00
30170	Gas fitting with 1 gas hose 1000 mm, connection 1/2" and 1 hose nipple Ø 10 mm	330,00
30169	Gas fitting with 2 gas hoses 1000 mm, connection 1/2"	375,00
30161	Gas angle tap with access/conduction hose nipple Ø 10 mm (drill hole Ø 21 mm)	315,00
30172	Gas angle tap with gas hose 1000 mm, connection 1/2" conduction hose nipple Ø 10 mm (drill hole Ø 21 mm)	360,00
Gas hose / accessories		
30162	Gas safety hose L: 500 mm DIN 30665, Ø 18/10 mm, operating pressure up to 100 mbar	66,00
30060	Gas safety hose L: 1000 mm DIN 30665, Ø 18/10 mm, operating pressure up to 100 mbar	88,00
30163	Gas safety hose L: 1500 mm DIN 30665, Ø 18/10 mm, operating pressure up to 100 mbar	110,00
30160	Gas hose DIN 30664, Ø 14/10 mm, operating pressure up to 100 mbar (per meter)	22,50
Gas hose / accessories		
30194	Hose connector cross 10 mm	16,50
30193	Hose connector T -piece 10 mm	11,60
30195	Hose connector straight 10mm	10,20
30196	Hose clamps 8-12 mm	3,70
30188	Clamp ring connector for 10 mm CU pipes	35,80
30187	Clamp ring connector for 12 mm CU pipes	35,80
30186	Clamp ring connector for 15 mm CU pipes	35,80

LABORATORY REQUIREMENTS

TR-Box

20235	TR - Box for articulator	129,50
20218/7035	TR-Box mini T-Loc for 6 models inclusive foamed material, light grey RAL 7035	29,50
20218/7016	TR-Box mini T-Loc for 6 models inclusive foamed material, anthracite RAL 7016	29,50
20243	Insert T-Loc for 6 models	9,00
20223	Lid padding T-Loc	6,20
20244	Floor padding T-Loc	3,60

THE ABOVE PRICES DO NOT INCLUDE. VAT AND DELIVERY OF EACH APPLICABLE FACTORY OFFEBURG

LABORATORY REQUIREMENTS

01/2025

Item no.	Product	Price / €
Disinfection bath		
10039	Disinfection bath with transparent lid, filling volume: 4 liters	on request
10040	Disinfection bath with white lid, filling volume: 4 liters	85,00
Breglit stainless steel care products		
20013	Breglit stainless steel basic cleaner, 500 ml	17,00
20076	Breglit limescale remover, 500 ml	18,00
20008	Breglit stainless steel care, 1000 ml	31,50
20001	Breglit stainless steel care, 400 ml	18,50

POLYMERIZATION TECHNOLOGY

Polymerization bath		
10002	Polymerization bath IVO - 2	2640,00
10004	Polymerization bath IVO - 2 special	2390,00
10005	Polymerization bath IVO - 2 manual	2140,00
10003	Polymerization bath IVO - 4	2740,00
10033	Polymerization bath IVO - 4 special	2490,00
10006	Polymerization bath IVO - 4 manual	2240,00
	Polymerization baths are available with 110 V	on request
Cooling baths		
10017	Cooling bath KW - 2	920,00
10016	Cooling bath KW - 4	1020,00
SR-Ivocap accessories		
20006	Spring washers for SR - Ivocap clamping frame (1set = 12 pieces)	62,50
20075	Rubber gloves, heat resistant, 1 pair	30,30
20005	Floating balls, Ø 20 mm, 1000 pieces	165,00
20003	Dur - Fix - Hardener, bag with 200 g, 10% volume discount for 50 bags	11,90
20086	Spiral hose with connector for SR - Ivocap - cylinder	63,50
20146	Stainless steel lid for IVO - 2, IVO - 2 special, IVO - 2 manual	87,00
20116	Stainless steel lid for IVO - 4, IVO - 4 special, IVO - 4 manual	162,00
Wall-/ Stand holder		
20037	Wall holder for 2 SR - Ivocap - cylinders	109,00
20106	Wall holder for 2 SR - Ivocap - cylinders with 3 air sockets	233,00
20038	Wall holder for 4 SR - Ivocap - cylinders	165,00
20107	Wall holder for 4 SR - Ivocap - cylinders with 6 air sockets	315,00
20073	Stand holder for 2 SR - Ivocap - cylinders	146,00
20197	Stand holder for 2 SR - Ivocap - cylinders with 3 air sockets	267,00
20039	Stand holder for 4 SR - Ivocap - cylinders	202,00
20074	Stand holder for 4 SR - Ivocap - cylinders with 6 air sockets	347,00

THE ABOVE PRICES DO NOT INCLUDE. VAT AND DELIVERY OF EACH APPLICABLE FACTORY OFFEBURG